

Safety when working in buildings containing **PCBs**

Construction workers risk being exposed to harmful PCB chemicals when replacing or removing building components. The employer is responsible for ensuring that employees are properly protected against PCBs. Read below about how to protect yourselves against PCBs.

Check whether there are PCBs in the building

Before commencing work, you must check whether the building contains PCBs. If the building components contain PCBs, you must draw up a plan for how to prevent exposure to PCBs during work.

Training and instruction requirements

The employer must ensure that employees receive the necessary training and instruction if they are to handle building components containing PCBs. For example when replacing windows, removing rubber-like fillers and paints, and when removing double-glazed windows.

Avoid contact with PCBs

PCBs must not come into contact with the skin, and avoid inhaling vapours, smoke and dust. Use ventilation, respiratory protective equipment, protective gloves and overalls. Make sure to cover the area and thoroughly clean with a vacuum cleaner (class H).

Be careful not to spread PCBs to others. Remember good personal hygiene, e.g. wash your hands and face and shower at the end of the workday. Do not take overalls into the site hut.

Waste

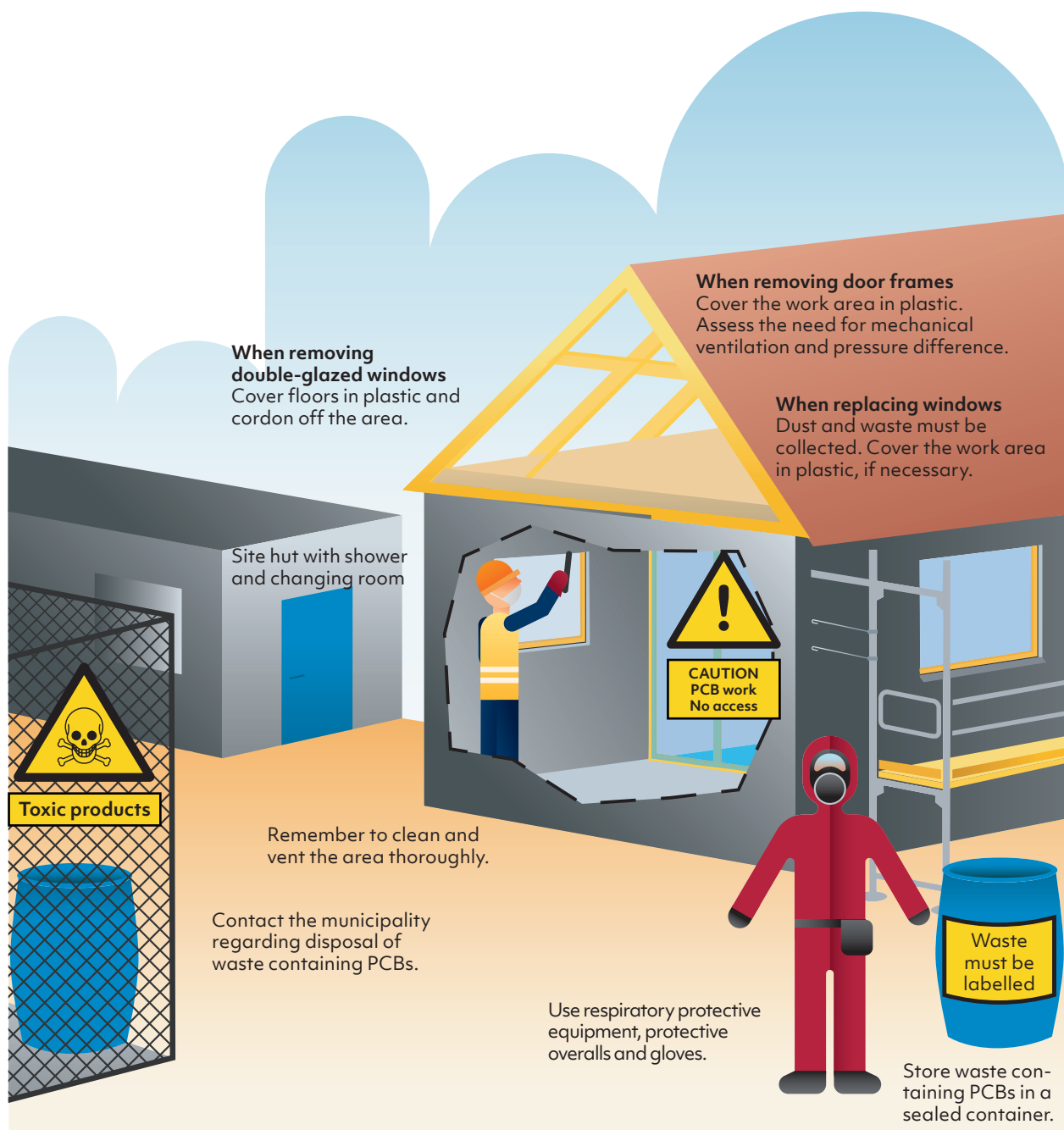
When storing waste containing PCBs, it is vital that this is done safely to prevent exposure to harmful impacts. Waste must be stored in a closed container and labelled with the following text: "Contains a substance that is covered by Danish OSH regulations as regards carcinogenic risk".

Disposal of waste must be in accordance with regulations in the environmental legislation. Contact the local municipality.

Read more about the regulations

Note that we have only highlighted the most important regulations on protection against PCBs. Learn more about the regulations in the WEA Guidelines and Executive Order as well as in the PCB guide (in Danish) and the [MANUAL – Working Environment for Building and Construction](#) prepared by the Sector Working Environment Committee for Building and Construction.

Protect yourselves against PCBs



What contains PCBs?

- PCBs are found in particular in buildings erected from the 1950s up to 1977, as well as older buildings which were renovated in the same period.
- PCBs are common in sealants and glue for double-glazed windows and in rubber-like fillers. Rubber fillers are usually applied around windows and doors as well as in joints between various building components, e.g. between concrete elements and in wet rooms.
- PCBs can also be found in masonry paint, floor paint and in slip-resistant floors.